

Homework 3:**Sections Through Envelope in General****Question to Answer:****Become aware of materials incorporated into contemporary building envelopes**

1 Study the following documents on the website:

Design-Strategies-for Moisture-Control.pdf

making-air-barriers-that-work.pdf

Understanding-Vapor-Barriers.pdf

http://www.mass.gov/?pageID=eopsterminal&L=4&L0=Home&L1=Consumer+Protection+%26+Business+Licensing&L2=License+Type+by+Business+Area&L3=Construction+Supervisor+License&sid=Eeops&b=terminalcontent&f=dps_inf_bbrs_sample_detail&csid=Eeops

2 Explain your strategy for moisture control for your brick veneer wall facing Washington Street.

3 Continuing the ideas from your in-class work, describe what changes, if any, you would make to your wall section if the building were located in a) Mobile, Alabama and b) Santa Fe, New Mexico

Drawing Work**Become familiar with the design by drawing it,****Create and draw the configuration and sizes of a structural concept**

strategy for the building envelope by designing a building cross section perpendicular to Washington Street: scale: 1/2" = 1'-0"

Location indicated on accompanying sketch.

Use cuts as needed to fit all the element of the drawing onto the sheet.

Criteria for marking this homework:**General Criteria**

Homework will be marked from '4' to '0.'

Answers to questions count as 1/3 of the mark for the homework

Drawings designed count as 2/3 of the mark for the homework

Criteria for Answers to questions

General: The response to this question is written, criteria are based on recommendations from 'Understanding by Design,' page 175

Requirements for a mark of '4' - "A clear, well developed [explanation] that deals in a sophisticated fashion with [key] components of the question. the question]]."

Requirements for a mark of '2' - General [explanation] responding to all components superficially."

Requirements for a mark of '0' - "Little or no analysis."

Criteria for quality of drawings

General:

Drawings are evaluated in terms of completeness, accuracy, and legibility

Requirements for a mark of '4' -

Work product capable of being incorporated into a project using building information management.

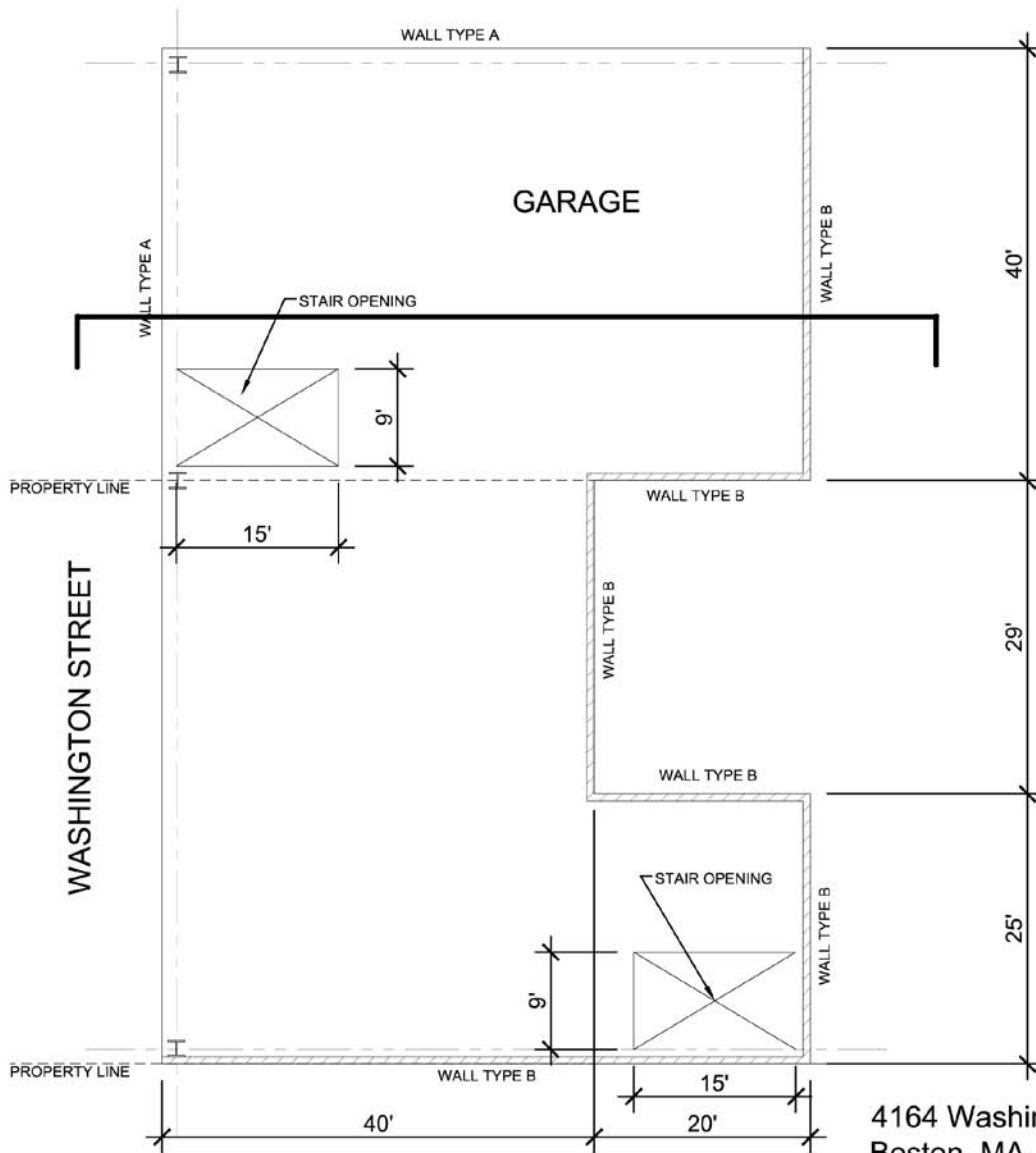
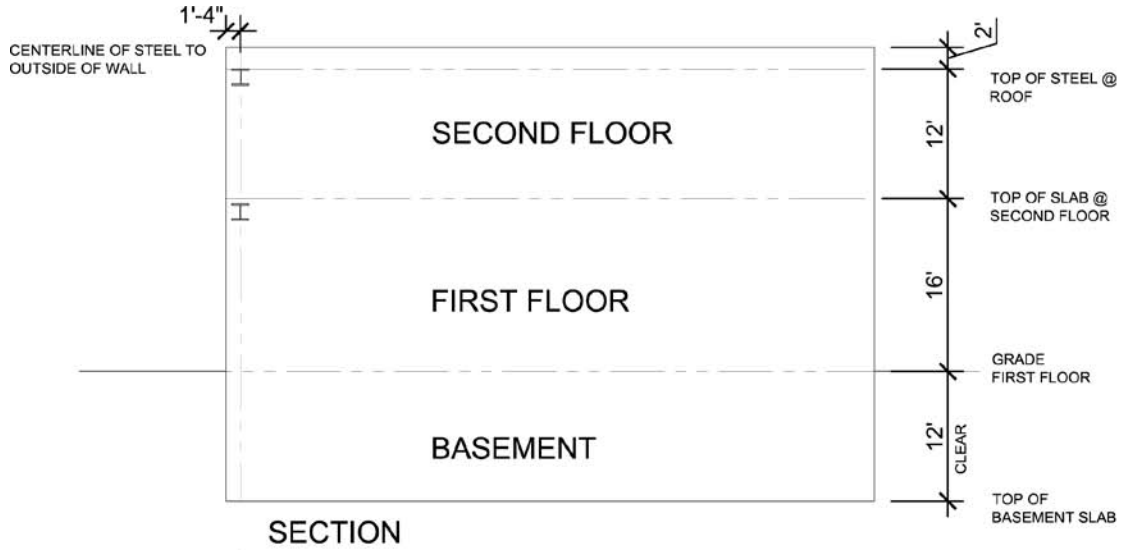
Requirements for a mark of '3' -

Work product could be submitted to a plans examiner. Criteria are as described by Liebling (Wiley, publisher) and in material provided in class web site.

Requirements for a mark of '2' -

Work product could be used to present an idea to a job captain

Requirements for a mark of '0' - Minimal drawing



PLAN 1/8" = 1'-0"

NOTE: ALL DIMENSIONS ARE TO EXTERIOR OF WALLS



4164 Washington Street
 Boston, MA
 Wall Type A - Brick Veneer
 Wall Type B - CMU