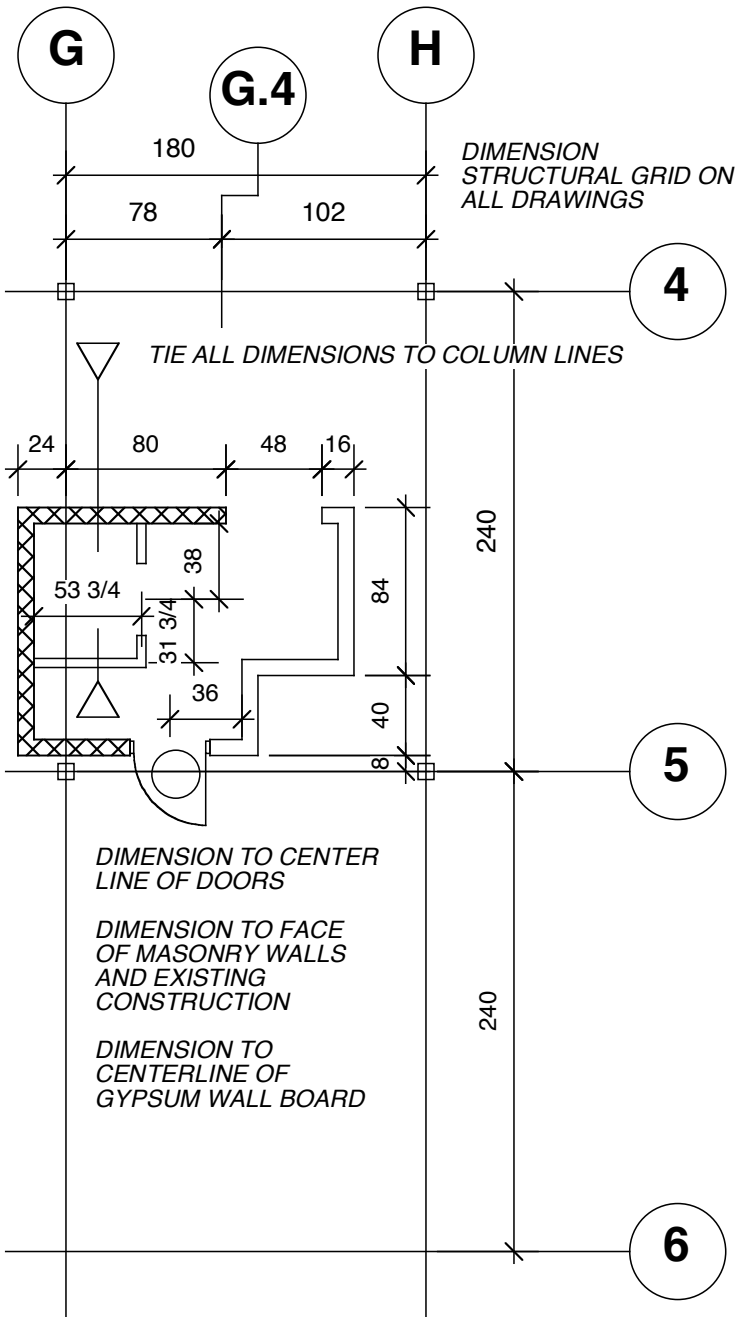


*INTERMEDIATE STRUCTURAL GRID
BREAK THE BAY INTO APPROXIMATE
DECIMAL EQUIVALENTS*



STRUCTURAL GRID

Use 1/2 In. diameter circles for column bubbles draw the grid in ink on the back of the drawing or on a locked layer if using a CAD system. Use a centerline designation. If drawing by hand, break the line once in the center of each bay. Label the horizontal grid with letter; the vertical grid with numbers. Use 18 - 20 pt. helvetica for the labels. Never use the letter "I" or "O" for designating the structural grid.

DIMENSIONS

Use the minimum dimensions to convey the necessary information. "Tie" all dimensions to the column grid.

BAC

BOSTON ARCHITECTURAL CENTER

320 Newbury Street
Boston • Massachusetts • 02115
617.536.3170 voice
617.536.5829 fax

**Graphic Conventions For
Architectural Drawings - 1**

**BAC TM 632
Architectural Detailing**

Date **September 5, 1996**

Scale **1/8" = 1' - 0"**