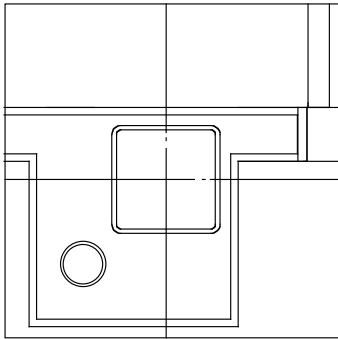
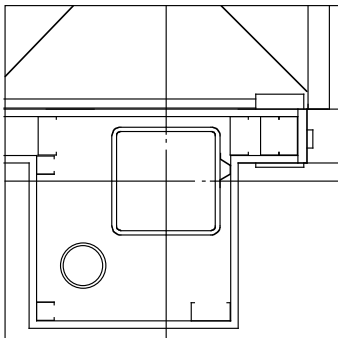


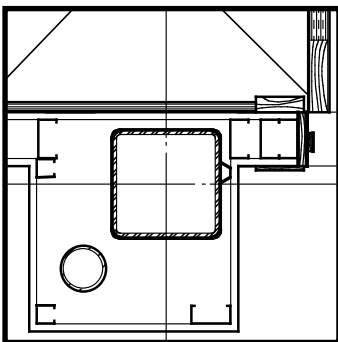
LAYOUT GRID AND STRUCTURAL ELEMENTS



PLUMBING, DRYWALL, AND BASIC DOOR CONFIGURATION



FINISHES IN DETAIL



MATERIAL DESIGNATIONS, GRAPHIC TUNE UP, (LABELS OMITTED IN THESE DRAWINGS FOR CLARITY)

NOTE:
SCALE SELECTED FOR ILLUSTRATIVE PURPOSES

GENERAL PROCEDURE

draw the drawing in the sequence in which it will be built
E.G.:
lay and draw out the reference grid in indelible ink
draw the structural elements
draw the enclosing elements
draw the equipment
draw the finishes

SPECIFIC PROCEDURE

START EARLY, BRING YOUR DRAWINGS UP TO COMPLETION TOGETHER
don't delay beginning a detail or a drawing for lack of complete information about its components,
THAT IS:
draw what you know as soon as you know it

AS YOU ARE DRAWING:
outline the extent of each material independently from other materials in the drawing
fill in graphic representation of materials later
bring up your notes and dimensions on the drawing as you know them

RULES ABOUT LINES

FUNDAMENTAL RULE: IF IT DOESN'T PRINT, ITS WRONG

line weight is line thickness, not softness of lead if you are drawing with pencil

general application of line weight:
use line weights which mimic the 'weight' of your materials (masonry & steel heavy; metal studs and drywall lighter; suspended ceilings lightest)

exceptions of application of line weight:
use heavy line weight to highlight an important element, regardless of its actual 'weight'

	Lightest Line, .15 mm
	Lighter Line, .33 mm
	Heavy Line, .48 mm
	Light Line For Format, .71 mm
	Heavy Line For Format, .96 mm

BAC

BOSTON ARCHITECTURAL CENTER

320 Newbury Street
Boston • Massachusetts • 02115
617.536.3170 voice
617.536.5829 fax

Making A Drawing

BAC TM 632 Architectural Detailing

Date **September 5, 1996**

Scale **3/4" = 1' - 0"**