

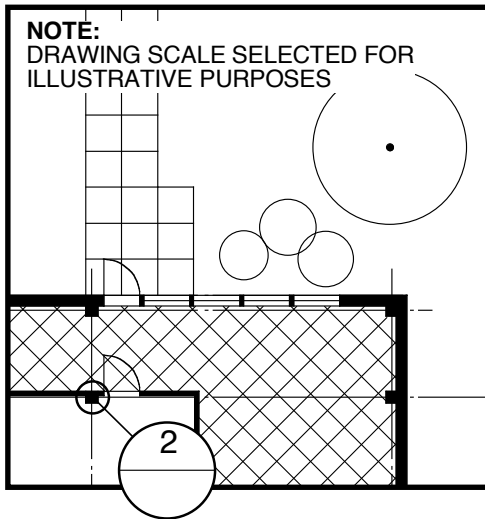
## DETAILS AND DETAIL DRAWINGS

A **DETAIL** IS A PORTION OF A BUILDING WHERE THERE IS AN **ASSEMBLY OF DIFFERENT MATERIALS**; LIKE THE ENTIRE BUILDING, IT IS THREE DIMENSIONAL.

**DETAIL DRAWINGS** ARE USED BY ARCHITECTS TO **DESIGN AND DESCRIBE THE DETAIL**; TYPICALLY THE DRAWINGS ARE TWO DIMENSIONAL, AND THEY NEED TO BE DRAWN IN SETS.

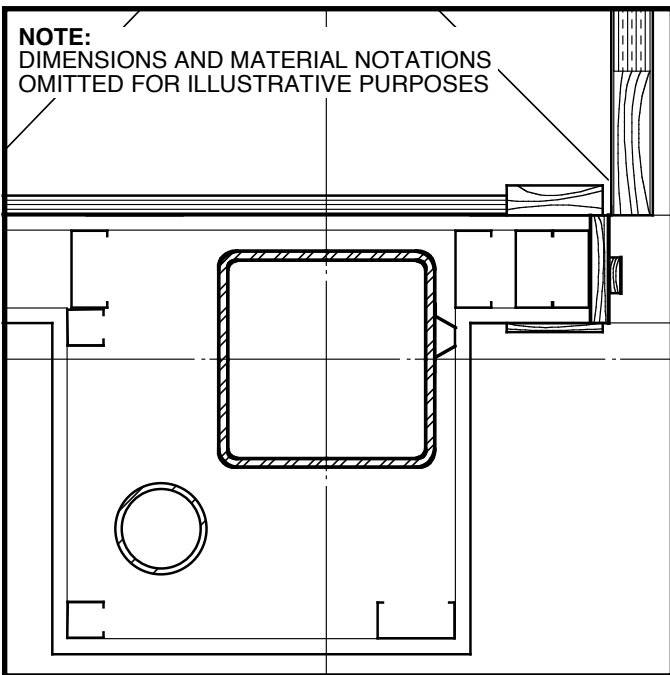
FOR THE SAKE OF CLARITY, DETAIL DRAWINGS ARE **DRAWN AT A SCALE WHICH ALLOWS THE ARCHITECT AND CONTRACTOR TO SEE EACH MATERIAL**, ITS CONFIGURATION, ITS WRITTEN DESCRIPTION, AND ITS RELATIONSHIP TO THE OTHER MATERIALS IN THE ASSEMBLY.

SETS OF DETAIL DRAWINGS ARE **CROSS REFERENCED TO EACH OTHER AND TO MORE GENERAL DRAWINGS** LOCATING THE DETAIL WITHIN THE BUILDING



**1** **Plan Locating Detail**

Scale: 1/16" - 1' - 0"



**2** **Plan Detail**

Scale: 1-1/2" - 1' - 0"

# BAC

BOSTON ARCHITECTURAL CENTER

320 Newbury Street  
Boston • Massachusetts • 02115  
617.536.3170 voice  
617.536.5829 fax

## Details Defined

### BAC TM 632 Architectural Detailing

Date **September 5, 1996**

Scale **Noted**